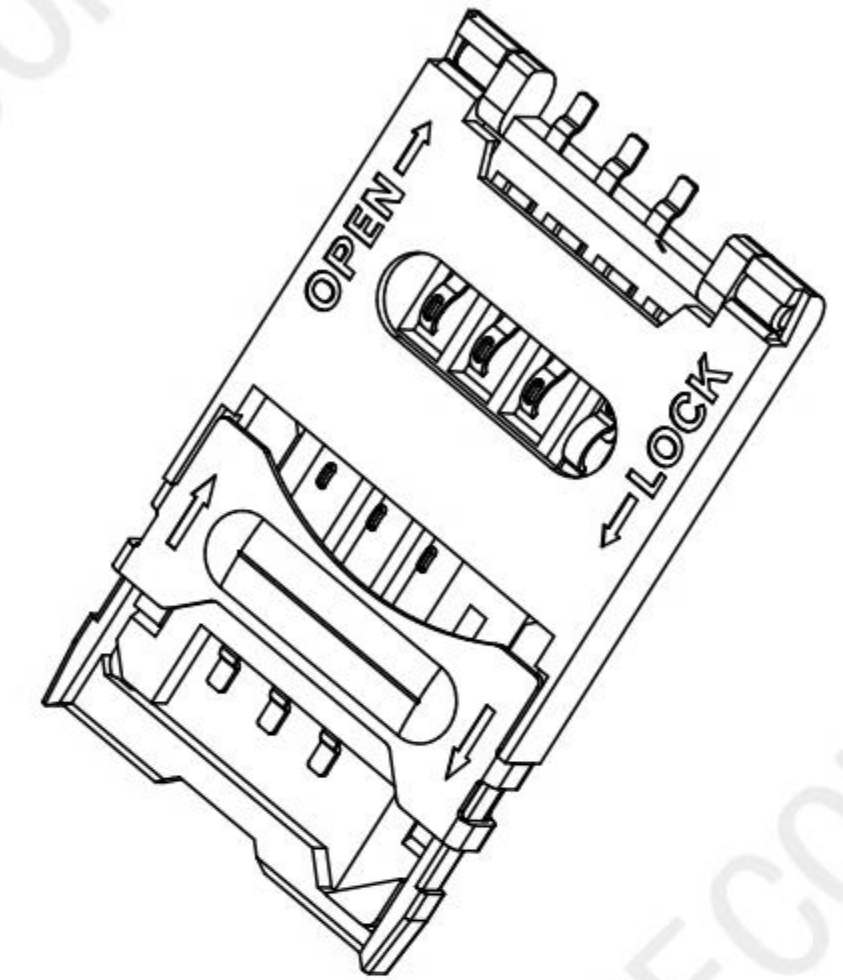
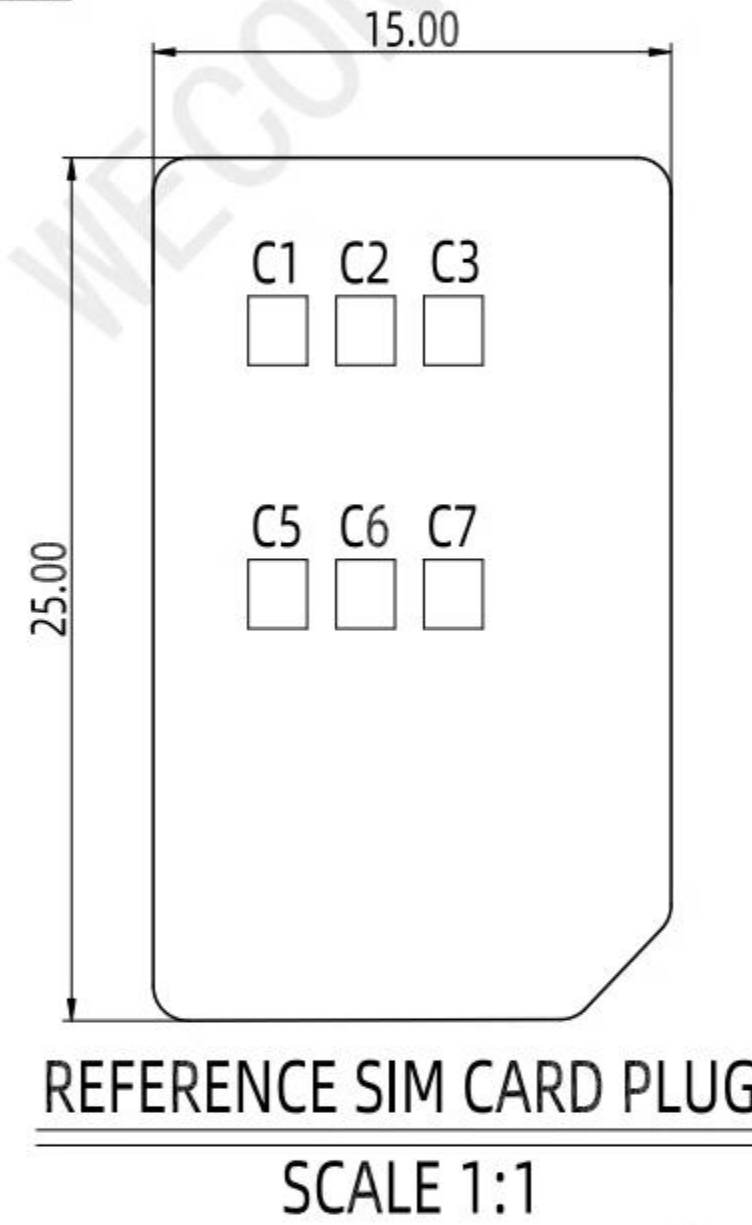
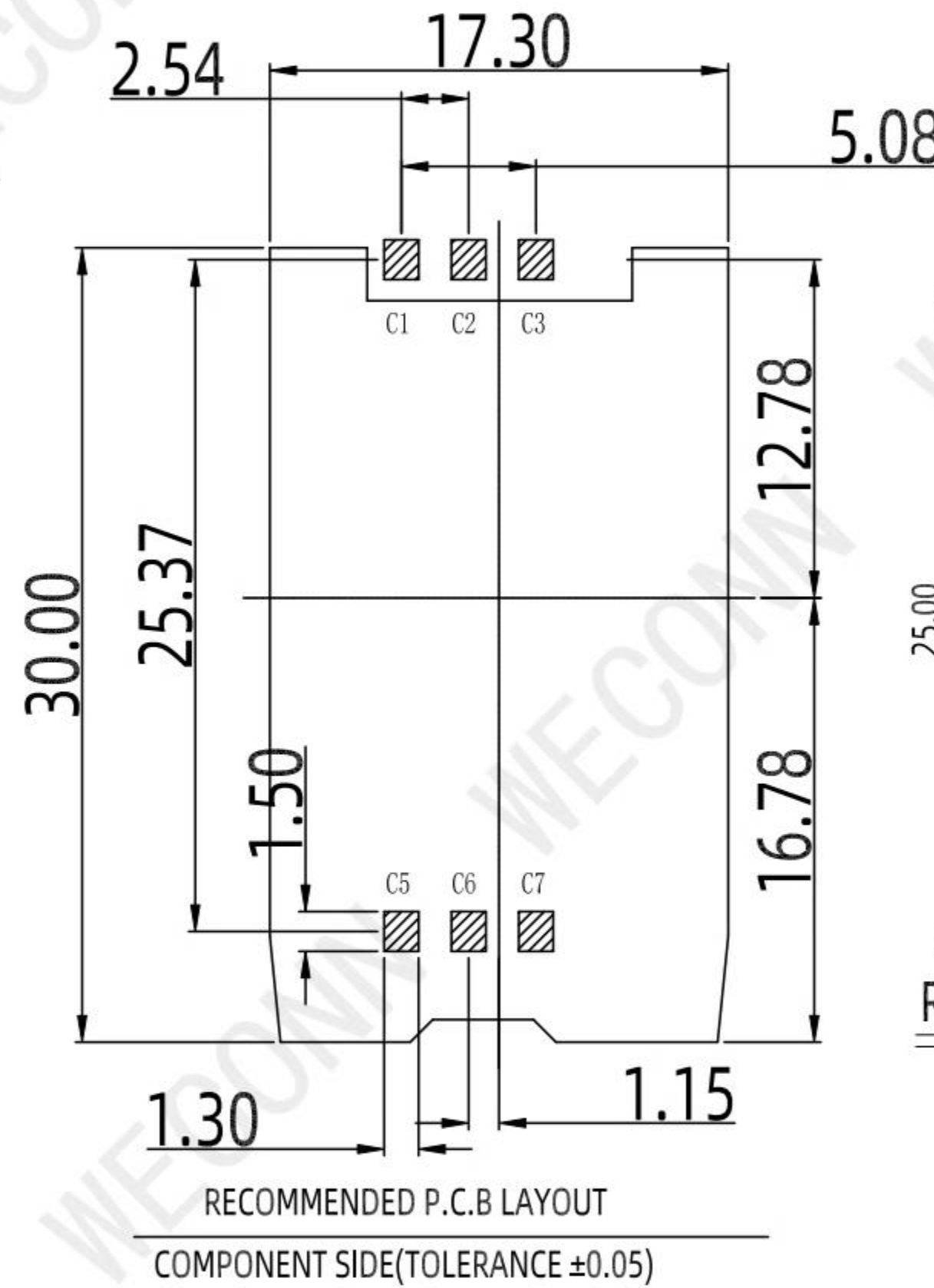
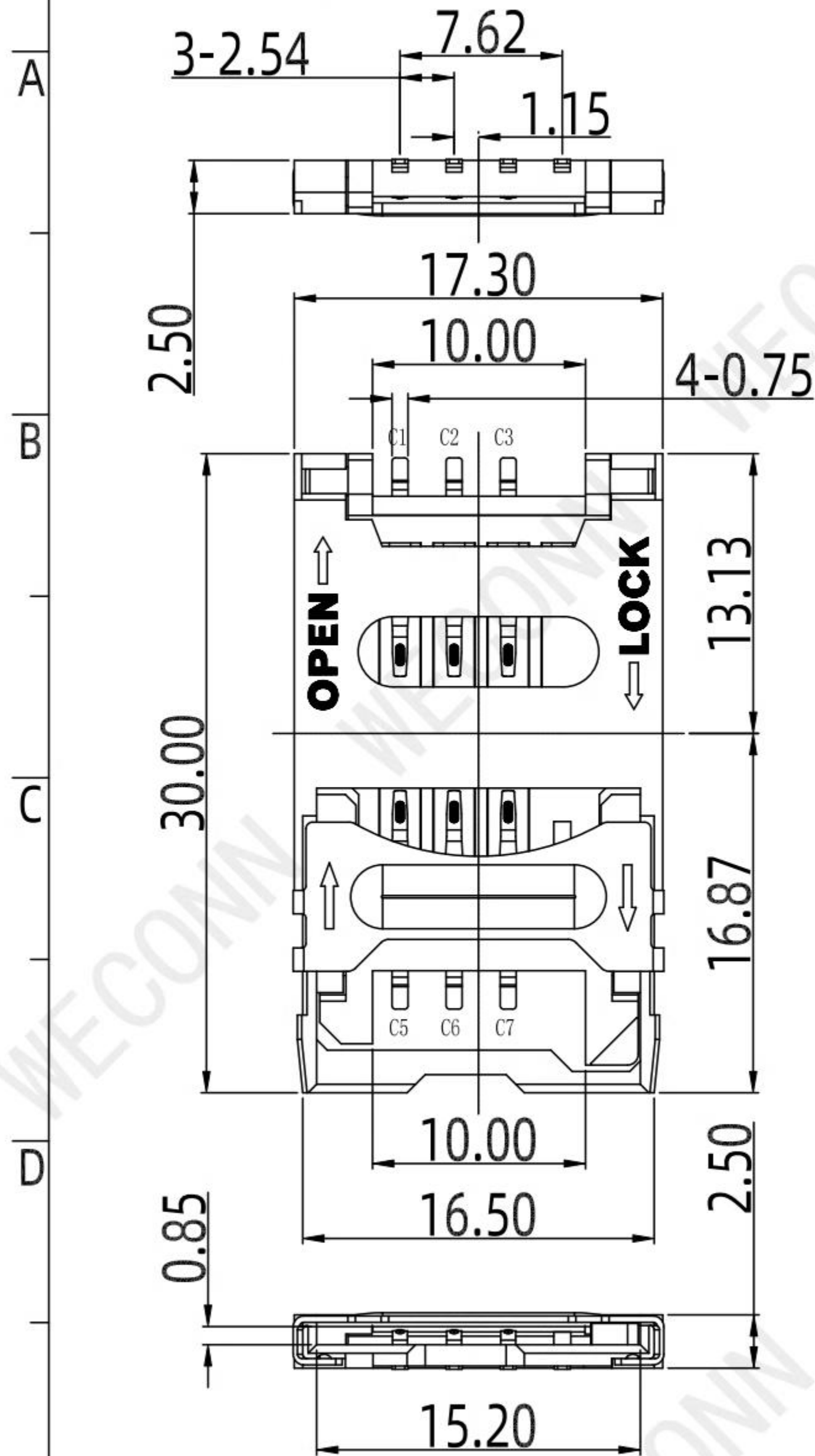


RoHS

REV.	EC#	DESCRIPTION	DATE	DRAWING	CHECKED	APPROVED
A0		NEW RELEASE	2019.10.08	Michael	Mark	Cornelia



Specification 规格:

Material 物料规格:
 Housing 塑胶主体: LCP UL94V-0
 Contact Terminal 接触端子: Phosphor Bronze
 Metallic Shell 金属外壳: Stainless Steel-SUS304

Plating 电镀规格:
 Contact Terminal Plating 接触端子部分电镀
 Contact Area: 5μ" Gold
 Soldering Area: 100μ" Tin
 Under-plating: 50μ" Nickel above

Electrical 电气规格:
 Voltage Rating 电压额定值: 50 V max
 Current Rating 电流额定值: 1A max
 Operating Temperature 工作温度: -40°C to +85°C
 Contact Resistance 接触电阻值: 50 mΩ typical, 100mΩ max
 Insulating Resistance 绝缘电阻值: 1000 mΩ min. (Apply 施加 500V DC)
 Dielectric Withstanding Voltage 耐压: 500 VAC for 1 minute

Mechanical 机械性规格:
 Durability 耐久性: min 5,000 cycles

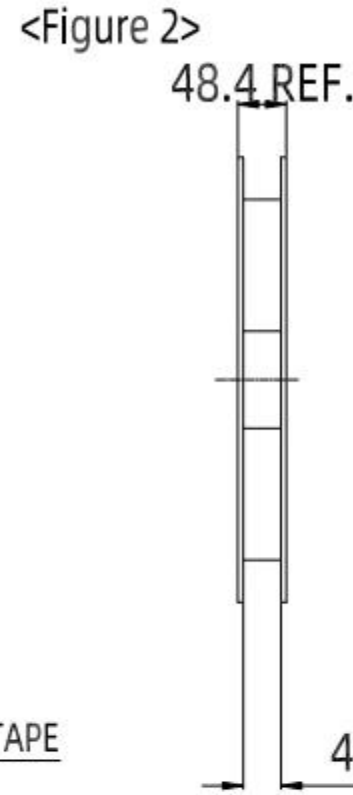
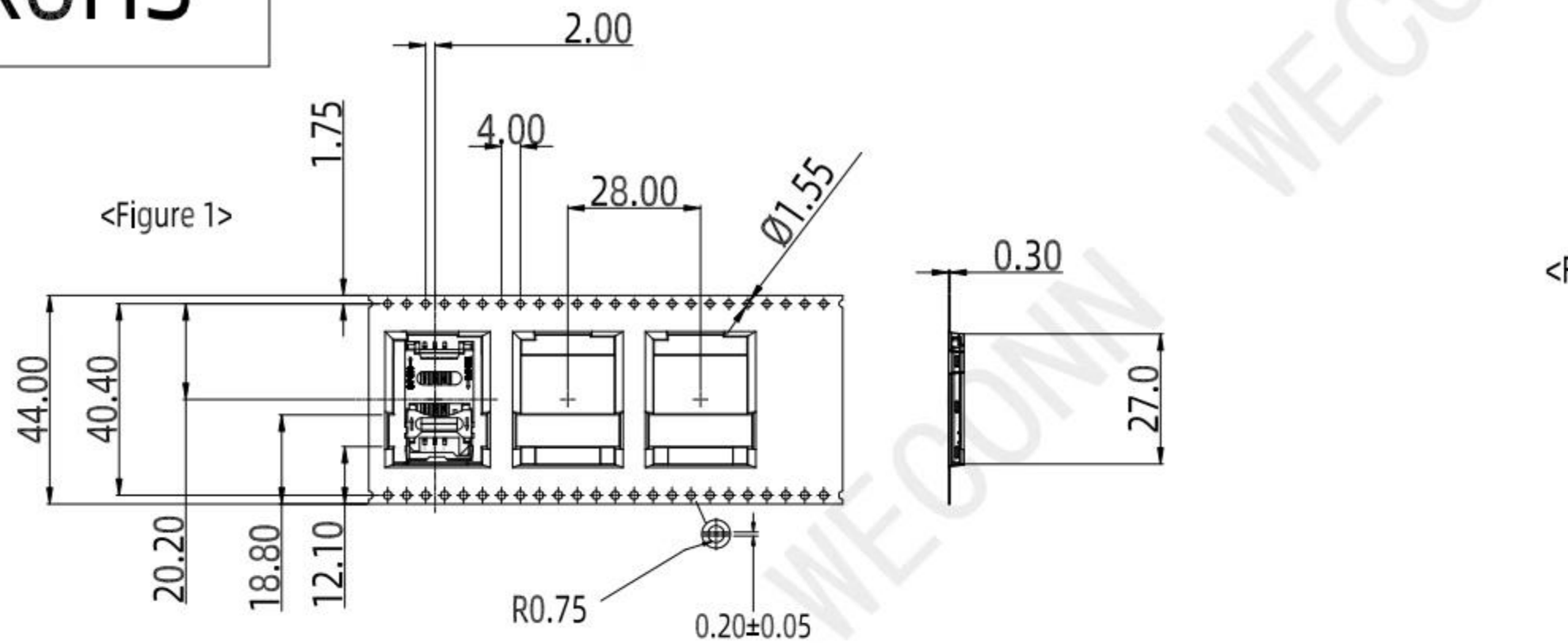
PLEASE CONTACT WELINK SALES REPRESENTATIVE TO VERIFY PRODUCT DETAILS & AVAILABILITY

SIM pin Assignment	MILLIMETERS	INCH	UNITS
			MM
PIN# Name	.X ± 0.30	.XX ± 0.012	MAT'L SEE NOTES
C1 VCC	.XX ± 0.20	.XXX ± 0.008	FINISH SEE NOTES
C2 RST	.XXX ± 0.10	.XXXX ± 0.004	
C3 CLK	QTY SEE NOTES		
C5 GND	THESE DRAWINGS AND SPECIFICATION ARE WELINK SHENZHEN WELINK ELECTRONICS CO., LTD COPIED OR USED IN ANY MANNER WITHOUT WELINK SHENZHEN WELINK ELECTRONICS CO., LTD		
C6 VPP			
C7 I/O			

WECONN 深圳市微连电子有限公司 ShenZhen Welink Electronics Co.,Ltd			
PART NUMBER: WL-SIM705-003		TITLE: SIM卡座 翻盖式 6P	
DWG NO.: WL-SIM705-003		APPD: Cornelia	CHKD: Mark
SCALE 1:1	SHEET 1/2	REV. A1	DR: Michael

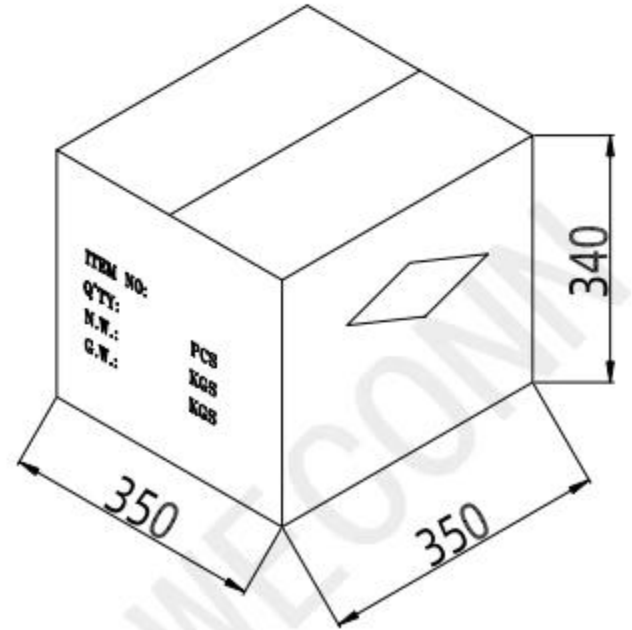
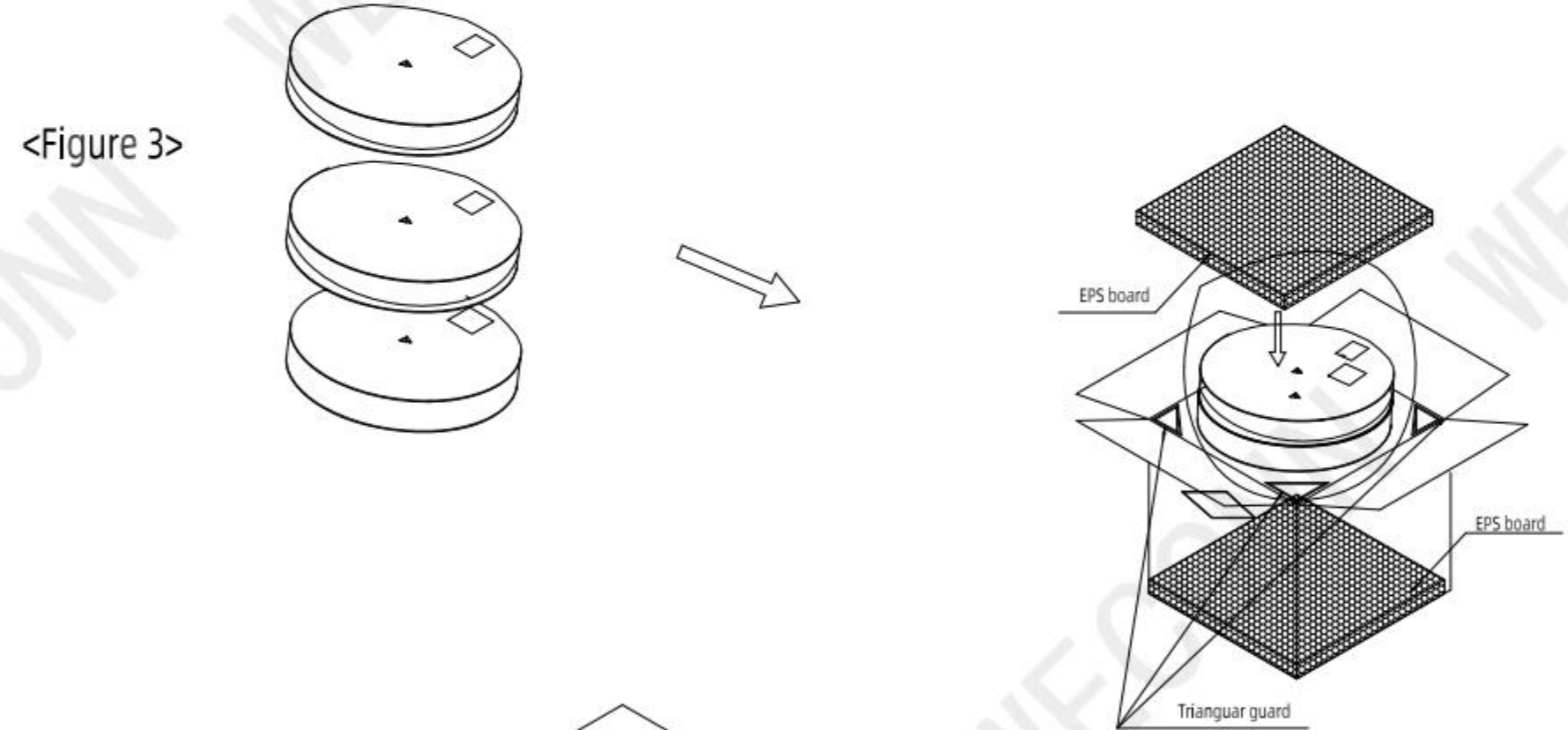
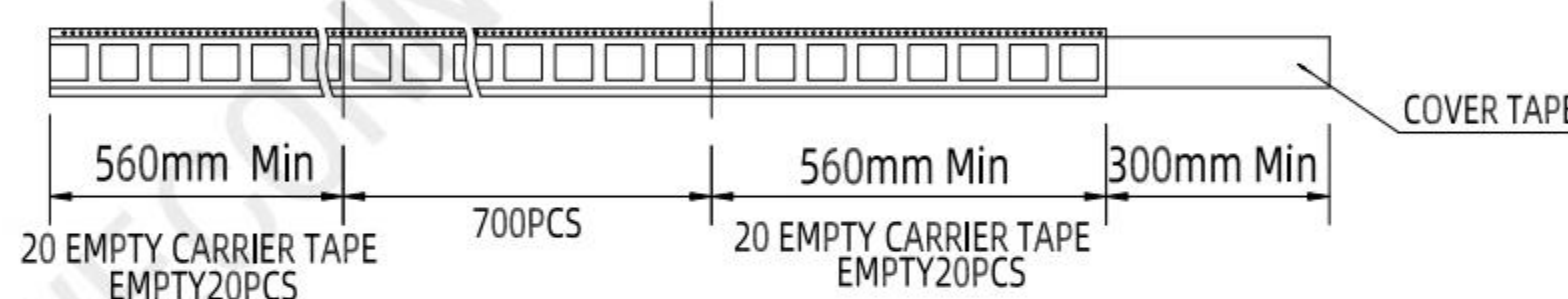
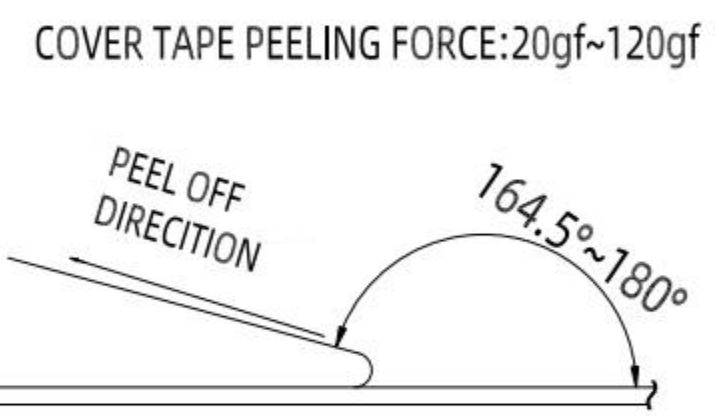
RoHS

REV.	EC#	DESCRIPTION	DATE	DRAWING	CHECKED	APPROVED
A0		NEW RELEASE	2019.10.08	Michael	Mark	Cornelia



<TABLE 1> PACKAGING QUANTITY

QTY/REEL	REEL/CARTON	QTY/CARTON
700	6	4200



- NOTE:
- Place 1 PCS product per hole according to <Figure 1>.
 - After the packaging machine is wrapped, stick tape on each equal point of the REEL to prevent the REEL from scattered. Label each REEL, as shown in <Figure 2>
 - The packaging quantity is shown as <TABLE 1>
 - Package, as shown in <Figure 3>
- Put the EPS board at the bottom of the box, and then put the REEL into the box. Put four triangular guards into the four corners, and put the EPS board on the top.
5. Seal the box, write the material number, quantity, etc. on the sealed carton according to customer requirements

MILLIMETERS	INCH	UNITS	WECONN® 深圳市微连电子有限公司 ShenZhen Welink Electronics Co.,Ltd			
X.° ± 2°	X.° ± 2°	MM	PART NUMBER:		TITLE:	
.X ± 0.30	.XX ± 0.012	MAT'L	WL-SIM705-003		SIM卡座 翻盖式 6P	
.XX ± 0.20	.XXX ± 0.008	SEE NOTES	DWG NO.:		APPD:	Cornelia
.XXX ± 0.10	.XXXX ± 0.004	FINISH	WL-SIM705-003		CHKD:	Mark
SEE NOTES		QTY	SCALE		DR:	Michael
SEE NOTES		SEE NOTES	1:1	SHEET 2/2	REV. A1	

THESE DRAWINGS AND SPECIFICATION ARE Welink ShenZhen Welink Electronics Co.,Ltd COPIED OR USED IN ANY MANNER WITHOUT Welink ShenZhen Welink Electronics Co.,Ltd