

DIMENSIONS				
POSITION	A ±0.20	B $\pm\begin{smallmatrix} 0.20 \\ -0.08 \end{smallmatrix}$	D ±0.25	E ±0.25
36	6	7.65	25.00	27.00
64	20	21.65	39.00	41.00
98	37	38.65	56.00	58.00
164	70	71.65	89.00	91.00

**NOTES:**

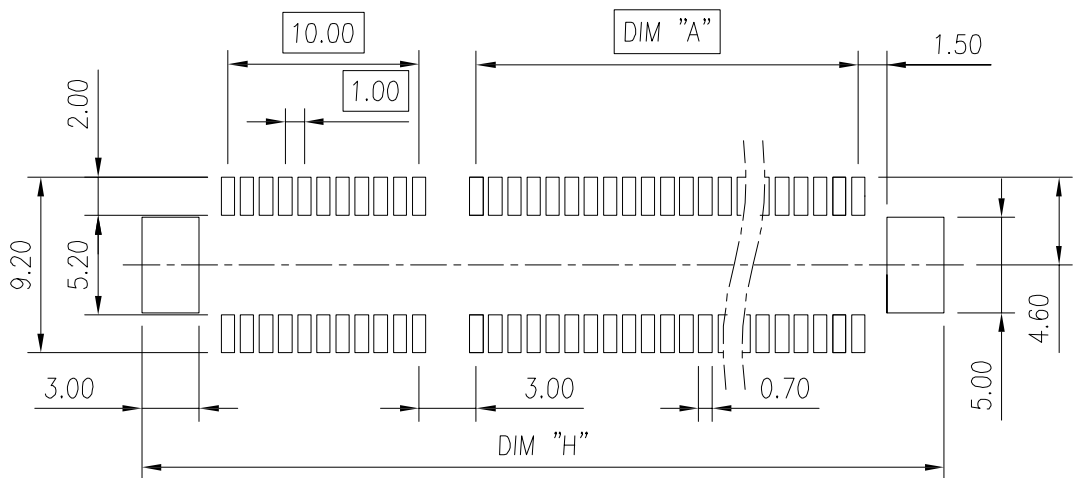
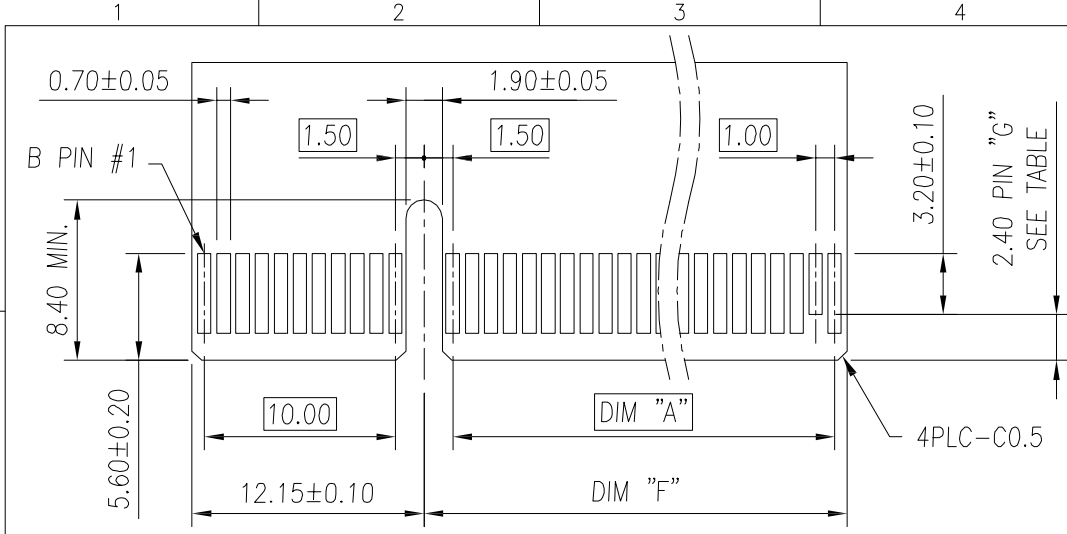
- MATERIAL:
  - HOUSING: THERMOPLASTIC, HIGH TEMP, UL94V-0, COLOR: BLACK.
  - CONTACTS: COPPER ALLOY.
  - HOLDDOWN: COPPER ALLOY.
- FINISH:
  - CONTACT: SELECTIVE GOLD PLATING ON CONTACT AREA. 100μ" MIN. MATTE TIN PLATING ON SOLDER TAILS, 50μ" MIN. NICKEL UNDERPLATING OVERALL.
  - HOLDDOWN: 100μ" MIN. MATTE TIN PLATING WITH 50μ" MIN. NICKEL UNDERPLATE OVERALL.
- PRODUCT SPEC.: PS-3GIO-02
- PACKAGING SPEC.: TRAY : 311304001  
REEL : 311304002

**PART NO.**

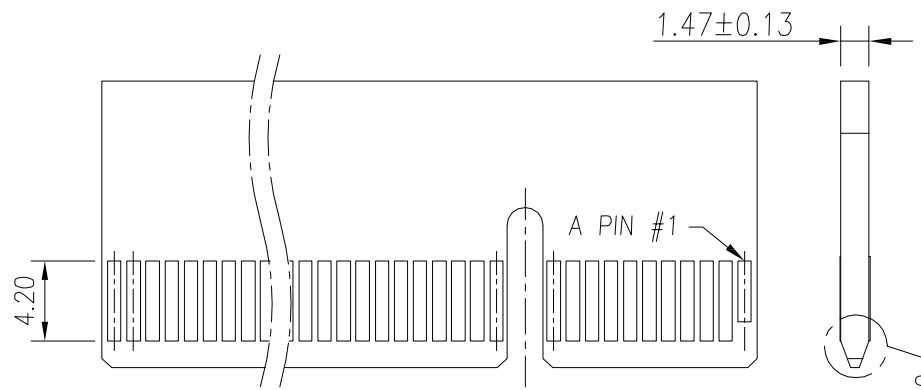
**8155 - 1 X X X**

- PCI EXPRESS Series No. \_\_\_\_\_ Packing Options
- HSG Color \_\_\_\_\_ T: Tray Without Cap
- 1: Black C: Tray With Cap
- Contact Plating \_\_\_\_\_ N: Tray With Mylar
- 0: 30μ", Gold R: Tape & Reel Packaging Without Cap
- 1: 15μ", Gold (For 36P, 64P, 98P)
- 2: 1μ", Gold P: Tape & Reel Packaging With Cap
- POS. Options \_\_\_\_\_ (For 36P, 64P, 98P)
- 0: 36 Pin M: Tape & Reel Packaging With Mylar
- 1: 64 Pin (For 36P, 64P, 98P)
- 2: 98 Pin
- 3: 164 Pin

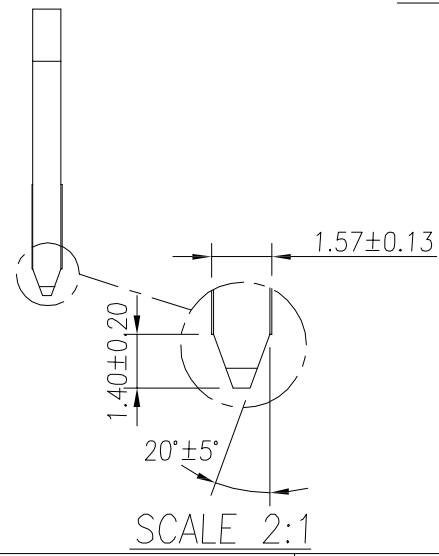
				TOLERANCE		<b>WECONN</b> ® 深圳市微连电子有限公司 <b>ShenZhen Welink Electronics Co.,Ltd</b>		TITLE: PCI EXPRESS SMT TYPE WITHOUT POST				
				LINEAR	ANGLES			PART NO. <b>8155-1XXX</b>				
C	15008	Terry	Feb,26,2015	X.±0.40	X°.±	APPD:	Jason	MAT'L:	DWG NO. <b>815507001</b>			
B	11059	Terry	Oct,06,2011	.X±0.30	.X°.±	CHKD:	Schumi	FINISH:	UNITS	SCALE	SHEET	REV
A	09038	Terry	Aug,13,2009	.XX±0.20	.XX°.±	DRWN:	Terry	Q'TY:	MM	1 : 1	1 OF 2	C
REV	ECN NO.	NAME	DATE	.XXX±0.10	.XXX°.±							



RECOMMENDED PCB LAYOUT, POST TYPE



I/O PANEL DIRECTION  
SECONDARY (SOLDER) SIDE  
ADD-IN CARD EDGE-FINGER DIMENSIONS



SCALE 2:1

DIMENSIONS				
POSITION	A ±0.10	F ±0.10	G	H ±0.10
36	6	8.15	B PIN#17	28.00
64	20	22.15	B PIN#31	42.00
98	37	39.15	B PIN#48	59.00
164	70	72.15	B PIN#81	92.00

				TOLERANCE		<b>WECONN</b> 深圳市微连电子有限公司 <b>ShenZhen Welink Electronics Co.,Ltd</b>		TITLE: PCI EXPRESS SMT TYPE WITHOUT POST			
		LINEAR	ANGLES	PART NO. <b>8155-1XXX</b>							
		X.±	X°.±	APPD: Jason	MAT'L:	DWG NO. <b>815507001</b>					
		.X±	.X°.±	CHKD: Schumi	FINISH:		UNITS	SCALE	SHEET	REV	
REV	See Sheet 1	.XX±	.XX°.±	DRWN: Terry	Q'TY:		MM	1 : 1	2 OF 2	C	
	ECN NO.	NAME	DATE	.XXX±	.XXX°.±	CUSTOMER					