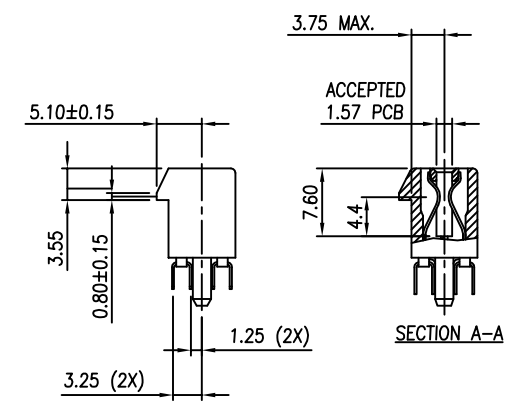


- NOTES:
- MATERIAL:
    - HOUSING: THERMOPLASTIC, HIGH TEMP., UL94V-0; COLOR: BLACK
    - CONTACTS: COPPER ALLOY.
  - FINISH:
    - CONTACT: SELECTIVE GOLD PLATING ON THE CONTACT AREA.  $100\mu$ " MIN. MATTE TIN PLATING ON THE SOLDER TAILS,  $50\mu$ " MIN. NICKEL UNDERPLATING OVERALL.
  - PRODUCT SPEC.: PS-3GIO-01
  - FOR WAVE SOLDER APPLICATION ONLY



PART NO.

8159 - X 0 X X 0 T

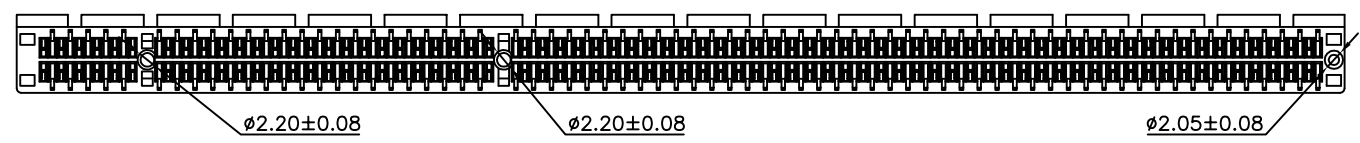
HSG Color: 1: Black

Peg Option: 0: Post

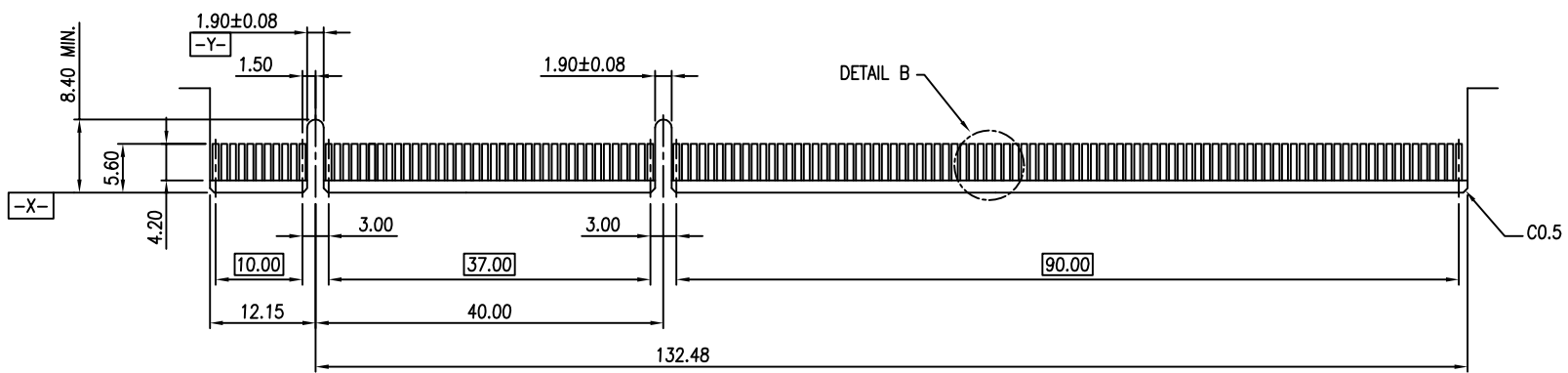
Contact Plating: 0: 30u" Gold, 1: 15u" Gold, 2: 1u" Gold

Packing Options: T: Tray

Tail Length (DIM "E"): 1: 3.10 mm, 2: 2.54 mm

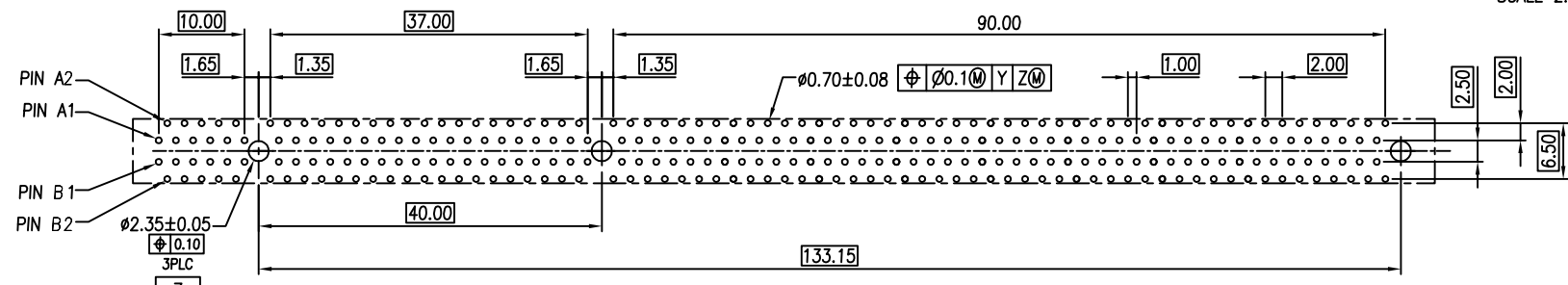
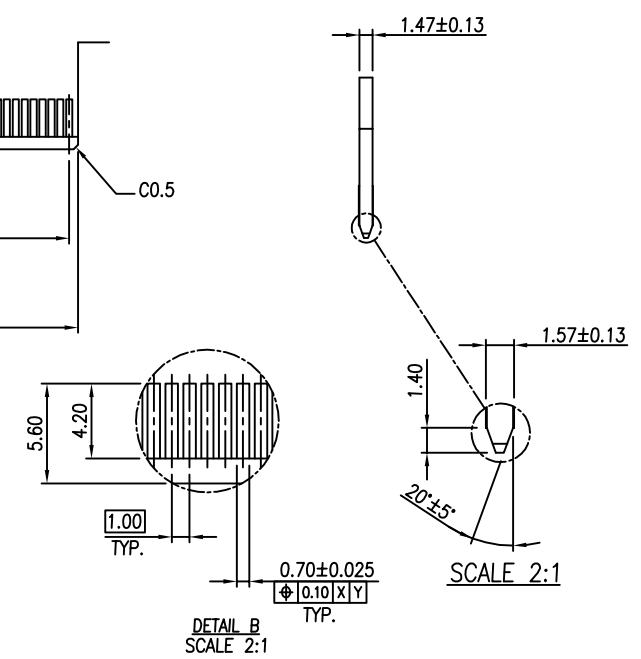


				TOLERANCE		WECOMM <sup>®</sup> 深圳市微连电子有限公司 ShenZhen Welink Electronics Co.,Ltd		TITLE: PCI EXPRESS CARD EDGE 280P			
				LINEAR	ANGLES			DWG NO. C-8159			
				$X. \pm 0.40$	$X' \pm 3'$	APPD: John	MAT'L:	UNITS: MM	SCALE: 1 : 1	SHEET: 1 OF 3	REV: 0
				$.X \pm 0.30$	$.X' \pm$	CHKD: Schumi	FINISH:				
0	---	Lei Songping	Dec,20,2019	$.XX \pm 0.20$	$.XX' \pm$	DRWN: Jason	Q'TY:				
REV	ECN NO.	NAME	DATE	$.XXX \pm 0.10$	$.XXX' \pm$						



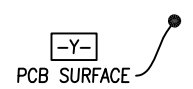
← I/O PANEL DIRECTION PRIMARY (COMPONENT) SIDE

ADD-IN CARD EDGE-FINGER DIMENSIONS



← I/O PANEL DIRECTION

RECOMMENDED FOOTPRINT

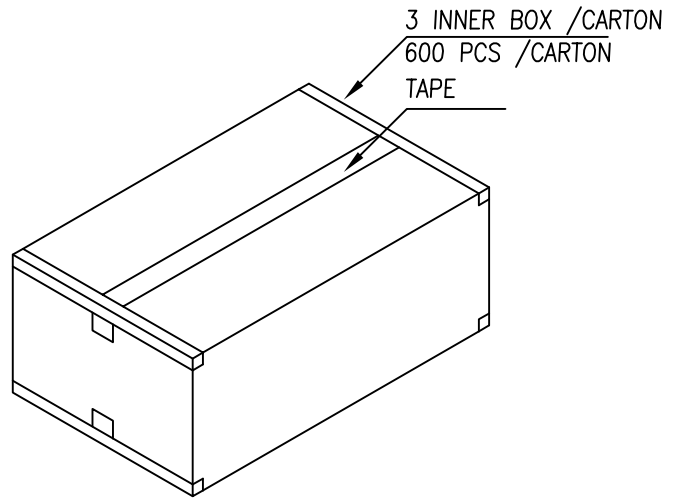
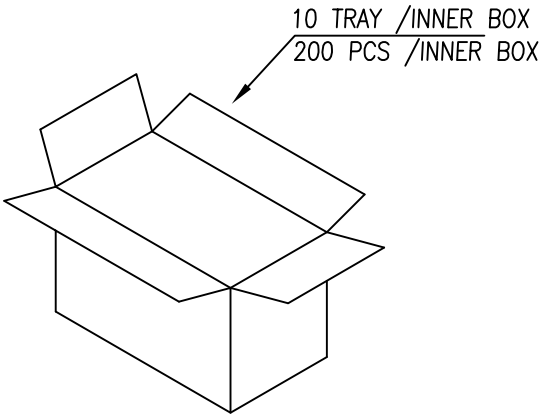
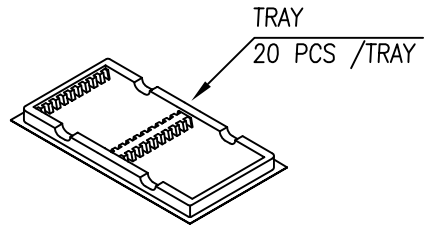
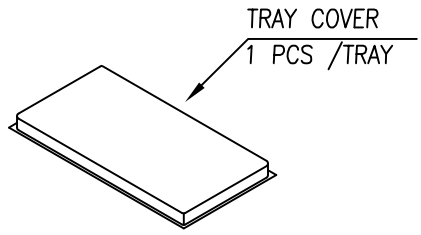


TOLERANCE	
LINEAR	ANGLES
X.±0.20	X'± 3'
.X±0.15	.X'±
.XX±0.10	.XX'±
.XXX±0.05	.XXX'±

<b>WECONN</b> 深圳市微连电子有限公司 ShenZhen Welink Electronics Co.,Ltd		TITLE:	
		PCI EXPRESS CARD EDGE 280P	
APPD:	John	MAT'L:	DWG NO. C-8159
CHKD:	Schumi	FINISH:	
DRWN:	Jason	Q'TY:	

REV	ECN NO.	NAME	DATE
	SEE SHEET 1		

	UNITS	SCALE	SHEET	REV
	MM	1 : 1	2 OF 3	0



NOTES:

1. TRAY COVER SIZE: 329.5mm(L)X 170mm(W)X 20mm(H).
2. TRAY SIZE: 328.5mm(L)X 170mm(W)X 20mm(H).
3. BOX SIZE: 340mm(L)X 187mm(W)X 210mm(H).
4. CARTON SIZE: 576mm(L)X 350mm(W)X 232mm(H).
5. NET WEIGHT: 8.7 Kg.
6. GROSS WEIGHT: 10.4 Kg.

SHIPPING CARTON

REV	SEE SHEET 1	NAME	DATE
	ECN NO.		

TOLERANCE	
LINEAR	ANGLES
X.±0.20	X'± 3'
.X±0.15	.X'±
.XX±0.10	.XX'±
.XXX±0.05	.XXX'±

<b>WECONN</b> 深圳市微连电子有限公司 ShenZhen Welink Electronics Co.,Ltd		
APPD:	John	MAT'L:
CHKD:	Schumi	FINISH:
DRWN:	Jason	Q'TY:

TITLE:				PCI EXPRESS CARD EDGE 280P			
DWG NO.				C-8159			
	UNITS	SCALE	SHEET	REV			
	MM	1 : 1	3 OF 3	0			